



Automated waste collection system

Waste management for sorting waste into one or more fractions with a focus on the environment and sustainability

Why automated waste collection system?

Future-proof your waste management

With an automated waste collection system from Aerbin, you get a green, sustainable and environmentally friendly system with lower operating costs, a cleaner and better working environment and your waste out of sight.

No more manual handling of waste

Automated waste collection system removes or eliminates manual handling of waste as it is sucked from inlets, either in the landscape or chutes in the building, directly to the collection container, which is picked up by a collection truck. This improves the working environment for services employees and avoids any risk of infection in connection with waste handling. Waste is suctioned daily to the collection container, which is why odors will never be experienced.



Operating costs

With an automated waste collection system, you achieve operational savings on service staff who must move containers back and forth. Other costs associated with residual waste collection are also reduced, as an automated waste collection system in operation is fully automated.

Service employees can now spend their time on more important tasks, such as ongoing maintenance, snow scraping, gardening etc.



Traditional waste containers are unhygienic and take up a lot of space in the environment. This is avoided by using automated waste collection system.



All our solutions are closed systems. This makes it impossible for mice, rats and other pests to encounter the waste.



Facilities around waste collection areas with the automated waste collection system can easily be kept clean and tidy as there are no overflowing bins to disturb the surroundings, which means less inconvenience from insects and bad odors.



The solution for your project

Automated waste collection system can service most projects, whether this is new development, renovation, urban renewal or similar. The system is designed to collect waste in one or more fractions and is therefore suitable for all aspects of waste management, such as urban renewal projects, housing development projects, parks, stadiums, hospitals etc.

The system are always tailor-made solutions and are always adapted to the number of fractions in the project.

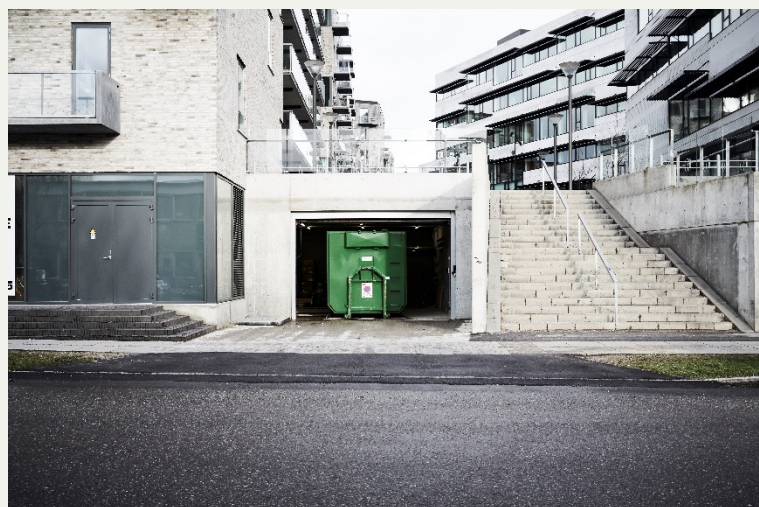
Visibility

In the cityscape, an automated waste collection system is as anonymous as a waste management solution can be.

The automated waste collection system caters to the discerning project designer, architect or builder who wants a waste solution that is as inconspicuous as possible.

Our inlet are offered with option to manufacture inlet stands according to the customer's wishes. This applies to colors, design and materials.

The automated waste collection system and collection containers are incorporated into projects so that they do not distract from the landscape and architecture.



Project planning

We specialize in waste. By involving us in the design phase, the client is assured that specialists in the field are planning and designing the waste management solution. We have both expertise and experience when it comes to sustainable waste solutions. We are happy to make suggestions for the placement of the systems. Take us on the journey from the start and avoid problems in the design phase.

We are happy to develop and deliver digital components to architects and engineers if there are required in the design phase, and we also offer SO-design in 3D for collision control.

Easily integrated

Larger automated waste collection systems can be included in the design phase for new districts or urban renewal projects. It is possible to place waste containers in smaller storage rooms and inlets placed directly on the ground floor.



Waste capacity

An automated waste collection system is not limited by a volume of waste, number of homes or residents.

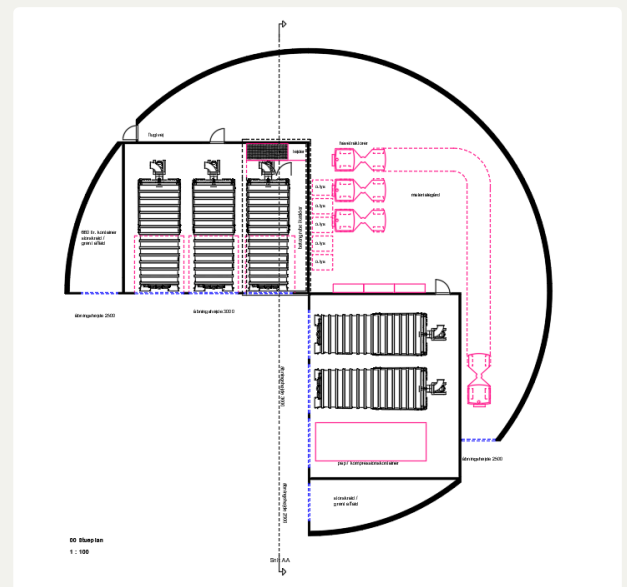


Example

For example, an automated waste collection system is available for 5 fractions:

- Residual waste
- Small cardboard
- Plastic waste
- Paper
- Organic waste / BIO waste

The facility can be located on the edge of the project area – up to 2 km. from the furthest inlet point.



Why an automated waste collection system?

- Because you want to avoid garbage trucks in your project area.
- Because you are environmentally conscious.
- Because you want to cut operating costs.
- Because you want to minimize waste management in the cityscape.

About Aerbin

For many, waste management is synonymous with odors, overflowing bins and large garbage trucks – a common part of the streetscapes and yards, but it doesn't have to be that way. Not at all, if you ask us...

We are Aerbin

A Danish company with one main purpose: to develop and integrate waste management solutions that save society money and time – and at the same time ensure a healthy, sustainable foundation for urban areas, housing estates or similar to achieve a greener profile. Waste management is an important part of society, it's common sense to spend time and resources doing it right, the first time.

The company was founded in 2005. We have since installed thousands of tanks across hundreds of waste management facilities in new and existing buildings. We saw the added value in automated waste collection system solution – both economic, environmental and social aspect.

After many years of thorough research, development and testing, we have the necessary knowledge to ensure our customers a reliable system from day one.

Focus on good collaboration

Although it's a cliché, our customers are always at the center. Our close collaboration with clients, architects and engineers gives our customers peace of mind and guarantees that the best solutions are developed and integrated.

From the very beginning, we have had our own production. We know all the components, which is why we can develop solutions that are future-proof - both in terms of technology and mechanics - such as mobile solutions, compact and fraction solutions. Our waste solutions can service everything from a small residential block to large urban areas. There are almost no limits...

We have the right setup to handle all kinds of waste management solutions.

Aerbin®

By Dansk Skraldesug

Egelundsvej 16
5260 Odense S
Tlf. +45 66 100 136
E-mail: info@aerbin.dk
Cvr.: 28498314